



WORLD'S BEST
ALLOY BULLBARS

East Coast Bullbars (ECB Pty Ltd)

Tel: 07 3897 5700

Fax: 07 3283 1168

ecb@ecb.com.au www.ecb.com.au

29 Snook St
Clontarf QLD 4019
Australia

Po Box 122
Margate QLD 4019
Australia

BF39SY

COMMENCES: 16.06.17
REVISED: 12.01.18

FITTING INSTRUCTIONS

FORD TERRITORY 7/14on BIG TUBE BAR WITH PARKING SENSORS AND FOG LIGHTS VEHICLE FRONTAL PROTECTION SYSTEM (VFPS) FOR AIR BAG & ADR COMPLIANT VEHICLES

Check installation hardware before commencing.

Special Requirements: Tube of clear neutral cure silicon.

1. Lift bonnet.
2. Remove radiator support to grille cover. Four plastic screw clips, two plastic push pull clips across rear and four clips at front attached as part of top cover.
3. From under vehicle, remove lower plastic air deflector, eighteen 7mm head screws. Pull under body guard forward and down at rear, then slide rearward to remove.
4. Remove three plastic push pull clips (per side) from front of inner guard. Behind inner guard at join from bumper cover to guard, remove two 10mm head screws (per side), one pointing up on vehicle and one pointing forward. From top of bumper between headlights, remove two 10mm head bolts. Carefully pull sides of bumper rearward and out from vehicle to release guard clips, lift from positioning lugs between headlights. **See figure 1.** Disconnect Parking sensors from under right hand side, fog lights, and antennae wire from left hand side as removing (if fitted). **Caution: bumper side plastic clips are easily damaged. Please use care when removing sides of bumper cover**
5. Remove lower polystyrene bumper support.
6. Clamp ECB steel mounting bracket (supplied) onto front bumper support aligning top and outside edge. Be sure to allow 3 to 4mm between ECB steel mounting bracket for intercooler tube.
7. Ensure ECB steel mounting bracket is central to vehicle. When correct measurement is achieved, using ECB steel mounting bracket as a guide, drill four holes (per side) in bumper support to 10mm and four 10mm holes in centre of cross member. **Blow filings clear and treat all exposed metal with a rust inhibitor. See figure 2.** **Caution: Ensure oil tube is clear of drilling area on diesel models.** Place M10 nut and washer on wire into bumper support at this time for ease of fitment.
8. Install ECB steel mounting bracket to bumper support using four M10 x 35 bolts, flat washers, spring washers and nuts (per side) and four M10 x 35 bolts, spring washers, flat washers and nuts on wire (supplied) in centre drilled holes (supplied). Use M10 nut and washer on wire (supplied) for left hand side nut under intercooler pipe and centre of cross member. **Warning:** Ensure ECB steel mounting hardware does not touch any vehicle pipe work as damage to vehicle could result. Lower air conditioning pipe work can be moved away from ECB steel mounting bracket by gently bending alloy section of tube either ends of flexible section. Caution is needed to not place strain on air conditioning fittings. **See figure 3. TIGHTEN ALL BOLTS.** Trim and crimp nut wire to bumper support to avoid rattling.
9. Splice indicator / park light wiring into original wiring harness behind headlight using cable locks (supplied).
10. Drill hole in fog light blank in bumper cover to allow wiring to pass for Protection Bar lights.



**WORLD'S BEST
ALLOY BULLBARS**

East Coast Bullbars (ECB Pty Ltd)

Tel: 07 3897 5700

Fax: 07 3283 1168

ecb@ecb.com.au www.ecb.com.au

29 Snook St
Clontarf QLD 4019
Australia

Po Box 122
Margate QLD 4019
Australia

11. Remove grille from front bumper. Using sharp scissors or similar, carefully cut out bumper template (supplied). Align bumper template with inner edge of bumper grille opening and mark cut area. **CAUTION:** As some printers may vary, check measure template to ensure correct dimensions.
12. Cut marked area from bumper cover using pull saw, hacksaw or similar.
13. Refit front bumper as per reverse of step 4. Do not refit radiator support to grille cover at this time. Feed ECB wiring harness through fog light blank in front of bumper cover.
14. Using grille opening and ECB steel mounting bracket as a guide mark and cut grille to fit around steel mounting bracket. Clean internal surfaces of outer silver grille trim using Methylated spirits or similar. Using clear neutral cure silicon, fill cut ends of outer silver grille trim. This not only stops dirt build up, it also stops possible rattle of parts. Fit grille to vehicle. **See figure 4.**
15. Attach ECB fog lights to protection bar. Place M6 x 20 bolts, spring washers (supplied) through light mount from inside and attach nut to top. Slide assembly into light mount in Protection bar and centralize light to hole.) **TIGHTEN FIRM ONLY.**
16. Attach 6mm clip lock trim (supplied) to top of ECB protection bar. NOTE: Trim off lower edge on an angle so trim will sit flush with end of protection bar. **See figures 5, 6 and 7.**
17. Attach 3mm clip lock trim (supplied) to front openings of ECB protection bar. NOTE: Trim off lower edge so trim will sit flush with lower leg of protection bar. **See figure 8.**
18. Install parking sensors into Parking sensor mounts. **See figures 9 and 10.** Wire parking sensors through holes in mounts and attach to lower leg of channel with zip ties provided.
19. Fit ECB protection bar to ECB steel mounting bracket using M12 x 40 bolts, flat washers, spring washers and nuts (supplied) for front holes and M12 x 40 bolt and washer on 300mm wire for rear, flat washers, spring washers and nuts (supplied) for lower rear holes. **FINGER TIGHTEN ONLY.** Bolts are accessed from under vehicle and behind grille opening and through indicator hole.
20. Align protection bar to vehicle. **See figures 11 and 12. TIGHTEN ALL BOLTS.**
21. Fit ECB LED indicator / park lights into protection bar as per instructions supplied with the LED indicator kit. NOTE: Ensure park light is to outside. **See figure 13.**
22. Attach ECB fog lights to protection bar. Place M6 x 20 bolts, spring washers (supplied) through light mount from inside and attach nut to top. Slide assembly into light mount in Protection bar and centralize light to hole. **TIGHTEN FIRM ONLY. See figure 14.**
23. Refit under body guard to underside of vehicle and radiator support to grill cover under bonnet, as per reverse of steps 2 and 3.
24. Connect ECB Indicator / park lights , fog lights and parking sensors. Check for correct operation.

ENSURE NUMBER PLATE IS CLEARLY VISABLE

Note: When fitting/refitting the licence plate to the vehicle, ensure there is no obstruction to licence plate vision in accordance with local authorities. If required relocate licence plate to an alternate location.

Further VFPS Notes:

- a) Do not attach VFPS to the vehicle using anchorages not intended for this purpose (e.g. engine mounting bolts).
- b) Do not use this product for any vehicle make or model, other than those specified by the VFPS manufacturer.
- c) Do not remove the plaque or label from the VFPS.



East Coast Bullbars (ECB Pty Ltd)

Tel: 07 3897 5700

Fax: 07 3283 1168

ecb@ecb.com.au www.ecb.com.au

29 Snook St
Clontarf QLD 4019
Australia

Po Box 122
Margate QLD 4019
Australia

- d) Do not modify the structure of the VFPS in any way.
- e) No accessory or fitment should project forward of the VFPS forward profile.
- f) Ensure these instructions are left with vehicle owner and/or operator.

IMPORTANT INFORMATION

Periodically check bolts and nuts for correct tightness, especially if travelling on rough roads

FITTING KIT

1 – ECB steel mounting bracket	8 – M6 flat washers
12 – M10 x 1.5 x 35 bolts	2 – M6 spring washers
19 – M10 flat washers	4 – M6 nyloc nuts
12 – M10 spring washers	2 – M6 nuts
7 – M10 x 1.5 nuts	1 – ECB LED indicator / park light kit (IC104ECB)
5 – M10 x 1.5 nut and washer on 300mm wire	6 – Cable locks
4 – M12 x 1.75 x 40 bolts	1 – ECB fog light kit
2 – M12 x 1.75 x 40 bolt and washer on 300mm wire	1 – Quick click kit (IC10D40S1004LEDH)
10 – M12 flat washers	2 – fog light surrounds
6 – M12 spring washers	10 – 150mm zip ties
6 – M12 x 1.75 nuts	1 – 2500mm length 6mm clip lock trim
6 – M6 x 20 bolts	2 – 300mm length 3mm clip lock trim



Figure 1: pull bumper rearward and out to release.

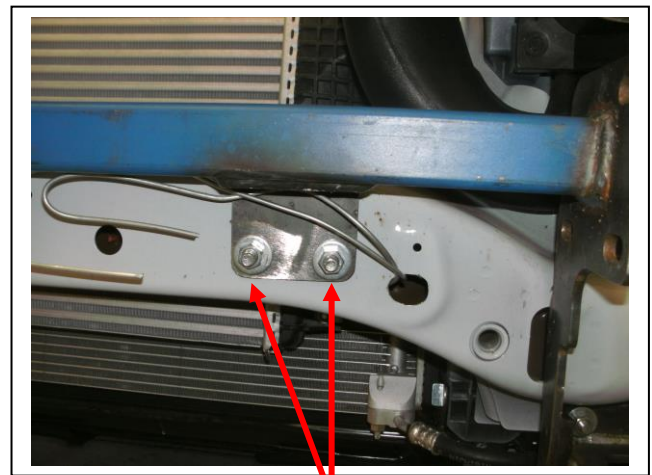


Figure 2: Drill holes to 10mm

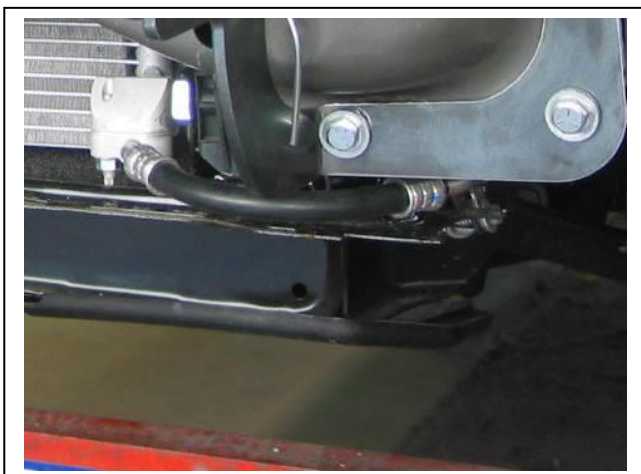


Figure 3: Check clearance between ECB steel mount and air conditioning pipe



East Coast Bullbars (ECB Pty Ltd)

Tel: 07 3897 5700

Fax: 07 3283 1168

ecb@ecb.com.au www.ecb.com.au

WORLD'S BEST
ALLOY BULLBARS

29 Snook St
Clontarf QLD 4019
Australia

Po Box 122
Margate QLD 4019
Australia

Figure 4: Approximate grille trim. Some vehicles will vary dependant on mount placement.

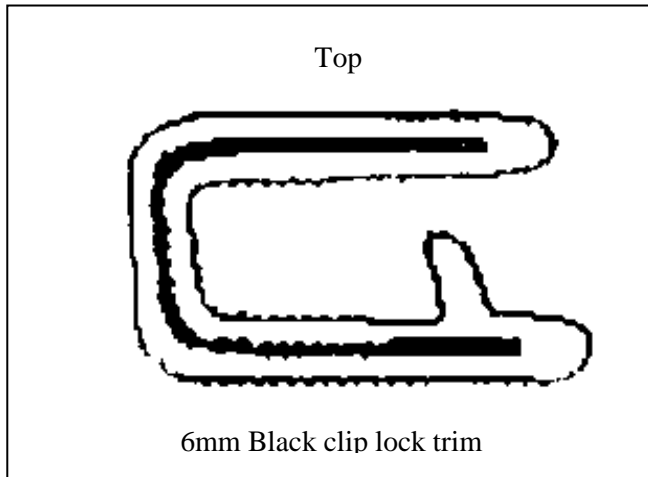


Figure 5

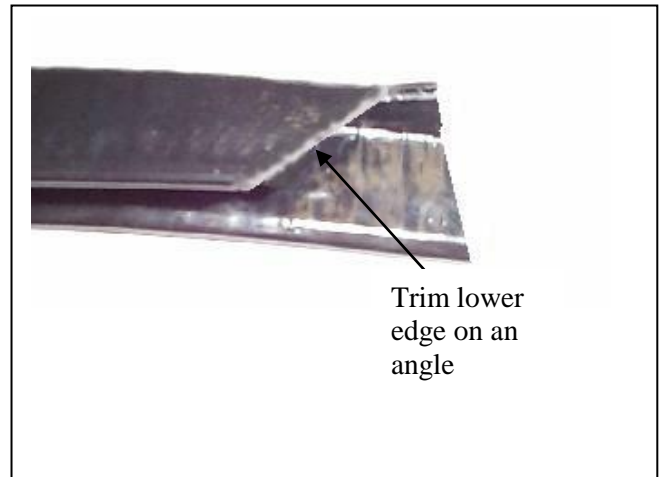


Figure 6

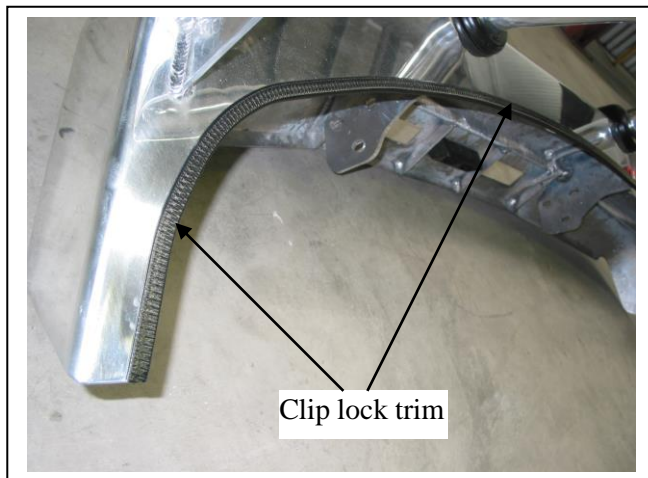


Figure 7



Figure 8: 3mm clip lock trim fitted



Figure 9: Parking sensor fitted to Protection Bar



Figure 10: Wiring in rear of Protection Bar



East Coast Bullbars (ECB Pty Ltd)

Tel: 07 3897 5700

Fax: 07 3283 1168

ecb@ecb.com.au www.ecb.com.au

WORLD'S BEST
ALLOY BULLBARS

29 Snook St
Clontarf QLD 4019
Australia

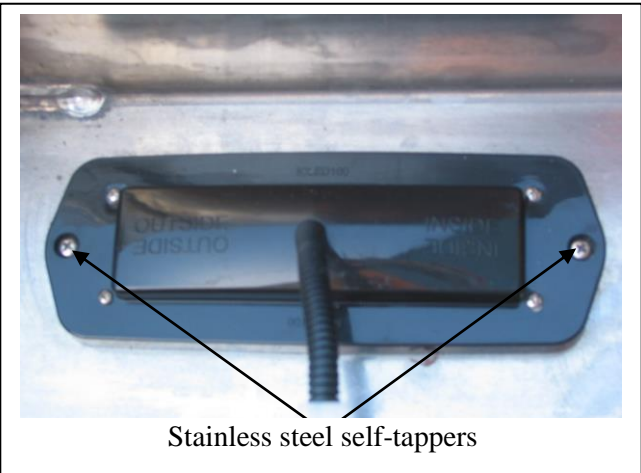
Po Box 122
Margate QLD 4019
Australia



Figure 11: Front view

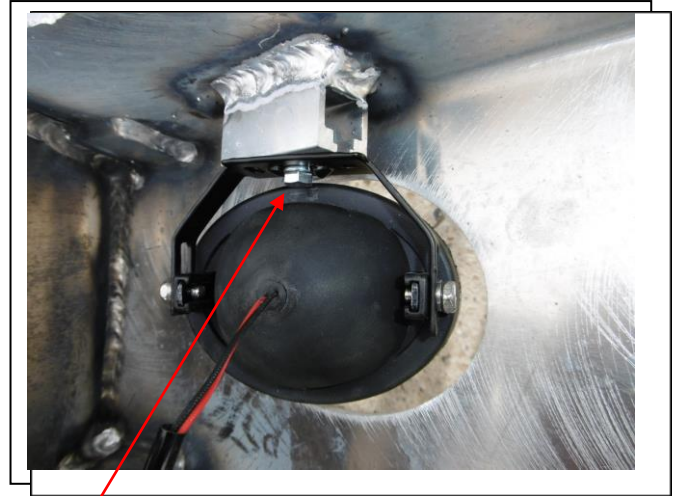


Figure 12: Side view



Stainless steel self-tappers

Figure 13



M6 bolt

Figure 14



**WORLD'S BEST
ALLOY BULLBARS**

East Coast Bullbars (ECB Pty Ltd)

Tel: 07 3897 5700

Fax: 07 3283 1168

ecb@ecb.com.au www.ecb.com.au

29 Snook St
Clontarf QLD 4019
Australia

Po Box 122
Margate QLD 4019
Australia

We value your comments

Dear Fitter,

ECB would like to know how you went with the installation of this product. We value your comment and may need to contact you to clarify some details so please complete your contact details clearly.

We would appreciate if you could complete as many of the following details as possible.

Your Name:	Your contact No.
Product Part No.	Product Invoice No.
Product Description:	Make, model, and year of vehicle:
Product Work Order No.	Company your from/Company product purchased from:

Date of Fitment: ____/____/____

Was the fitting hardware supplied complete?

Yes

No

If no what was not supplied

Did the installation go well?

Yes

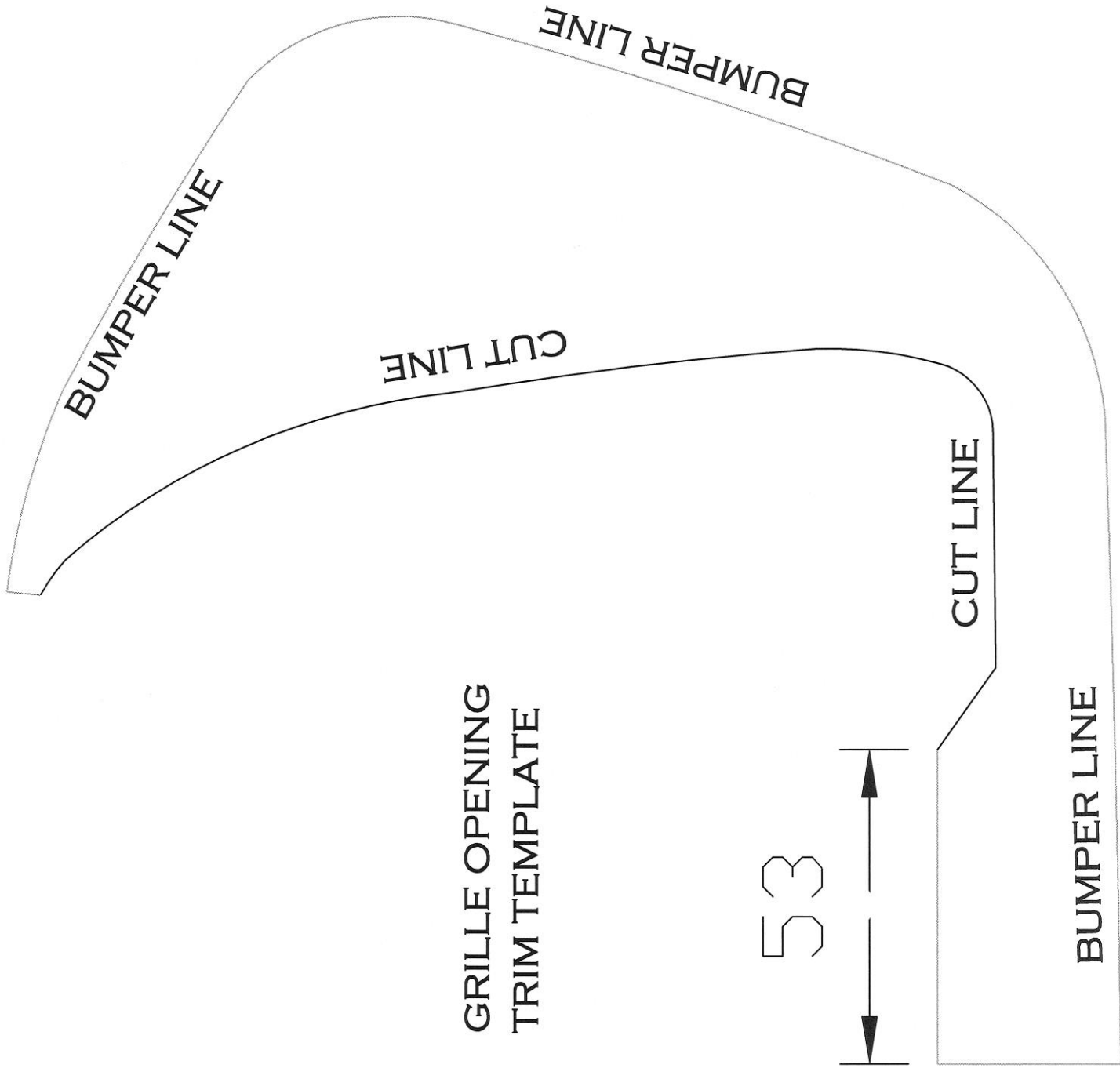
No

Please provide comments

Please draw diagrams if you need to.

Post to
Reply Paid 122
PO Box 122
Margate QLD 4019

Fax to
(07) 3283 1168





**WORLD'S BEST
ALLOY BULLBARS**

East Coast Bullbars (ECB Pty Ltd)

Tel: 07 3897 5700

Fax: 07 3283 1168

ecb@ecb.com.au www.ecb.com.au

29 Snook St
Clontarf QLD 4019
Australia

Po Box 122
Margate QLD 4019
Australia



WORLD'S BEST
ALLOY BULLBARS

East Coast Bullbars (ECB Pty Ltd)

Tel: 07 3897 5700

Fax: 07 3283 1168

ecb@ecb.com.au www.ecb.com.au

29 Snook St
Clontarf QLD 4019
Australia

Po Box 122
Margate QLD 4019
Australia

DESPATCH CHECKLIST BF39SY

Work Order #		See other side of this page for photos of all mounts
Finish:		
Transport:		
Due Date:		

- OC.....1 – Steel mounting bracket.
- BK.....1 – Bolt Kit.
- BK.....1 – LED ECB indicator / park light kit. (IC104ECB)
- BK.....1 – Fog light kit
- BK.....1 – Quick click kit (IC10D40S1004ECBH)
- BK.....2 – Fog light surrounds
- BK.....1 – 2500mm length 6mm clip lock
- BK.....2 – 300mm length 3mm clip lock
- OC.....2 – ECB Overrides – **Fitted to Bar**
- OC.....3 – 6mm Air Vents – **Fitted to Bar**
- OC.....3 – 3mm Air Vents – **Fitted to Bar**
- OC.....4 – Plastic Parking sensor mounts – **Fitted to Bar**



Is this product “the best it can be” Yes _____/_____
Wrapper's initials / Checker initials
 If **NO** fix before continuing

All parts checked and completed by:

Nut and bolts: _____ Date __/__/__

Order control: _____ Date __/__/__

Final wrap check: _____ Date __/__/__



**WORLD'S BEST
ALLOY BULLBARS**

East Coast Bullbars (ECB Pty Ltd)

Tel: 07 3897 5700

Fax: 07 3283 1168

ecb@ecb.com.au www.ecb.com.au

29 Snook St
Clontarf QLD 4019
Australia

Po Box 122
Margate QLD 4019
Australia

